

EDIFICIO B - Piano T

EDIFICIO B - Piano 1

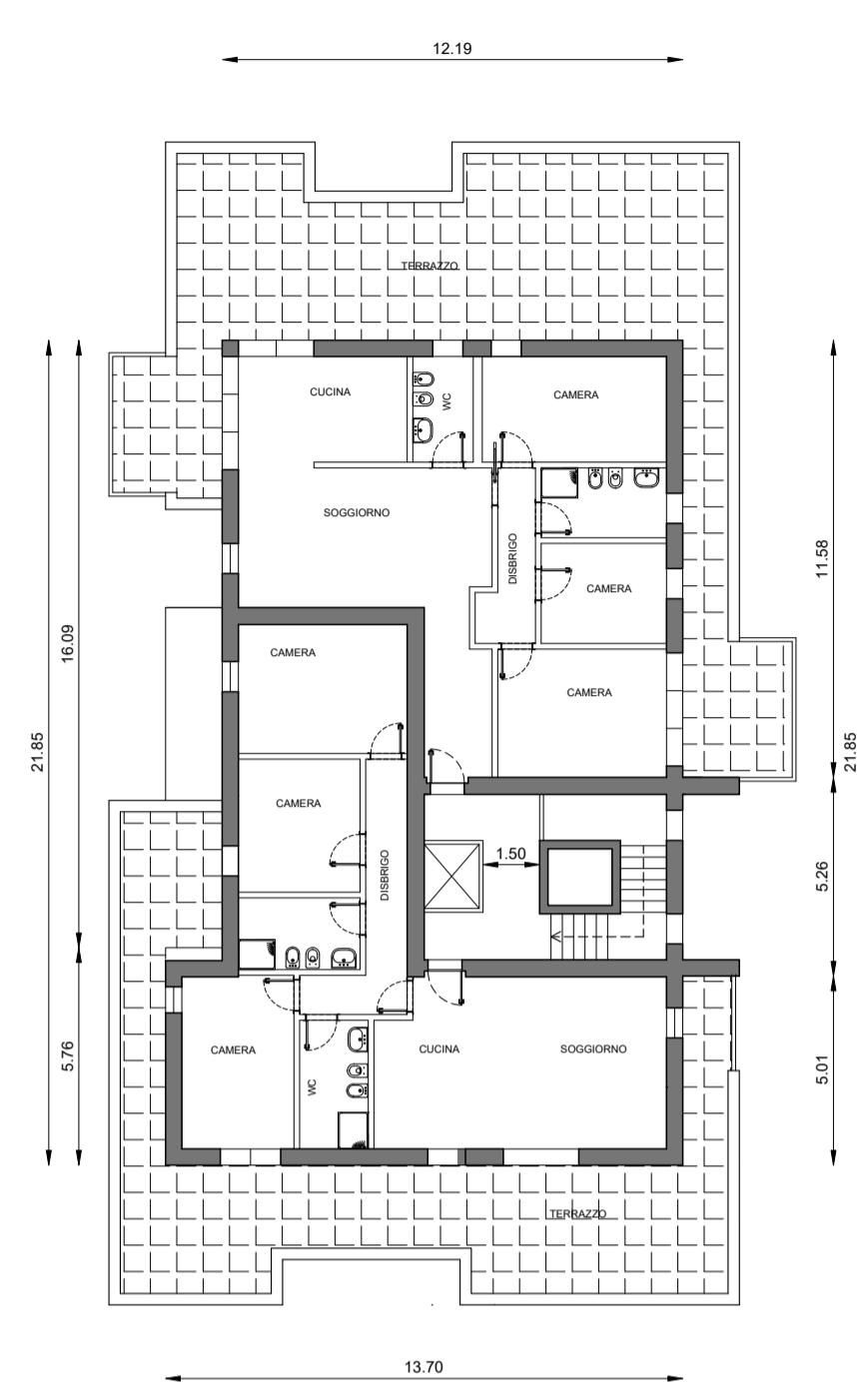
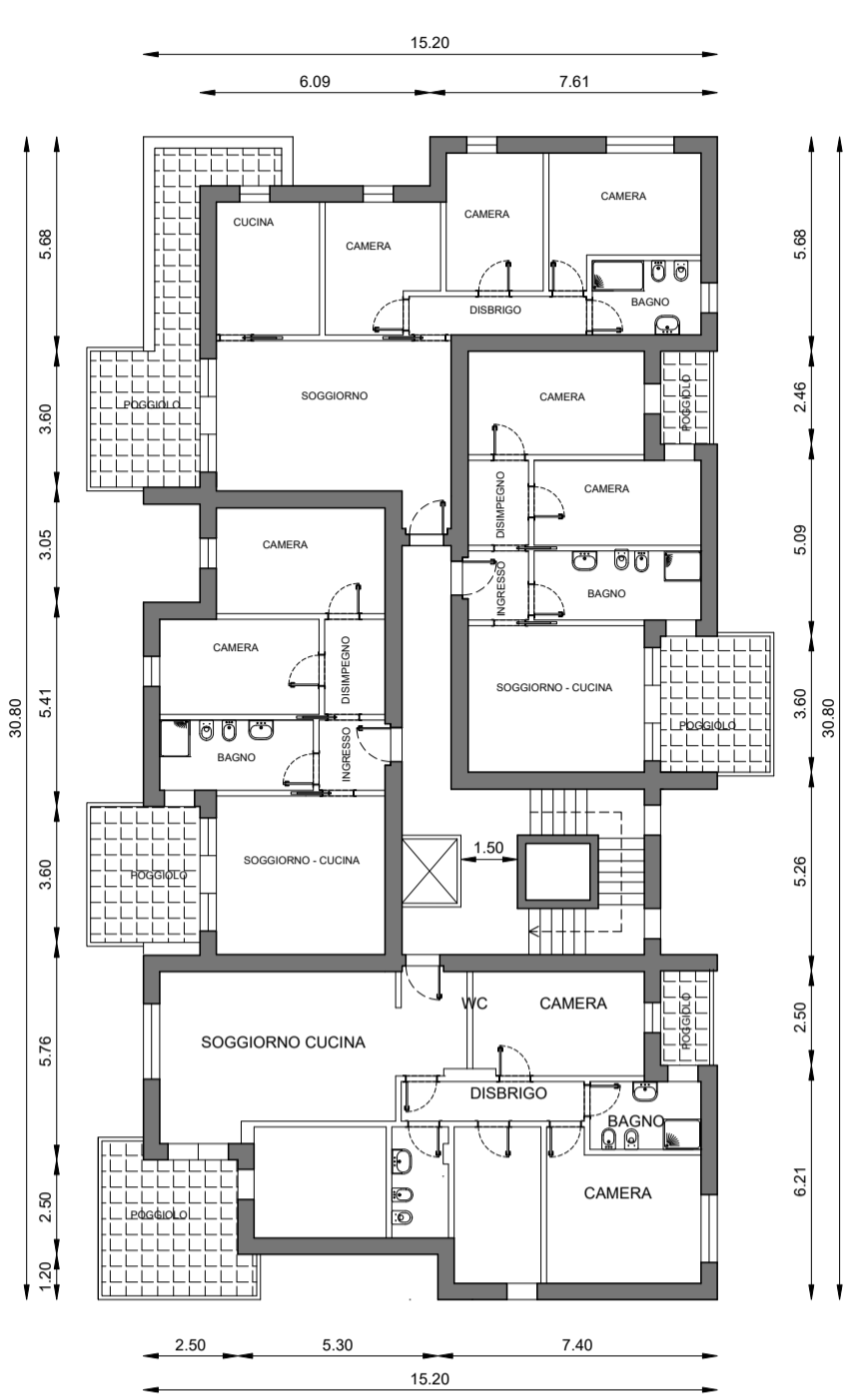
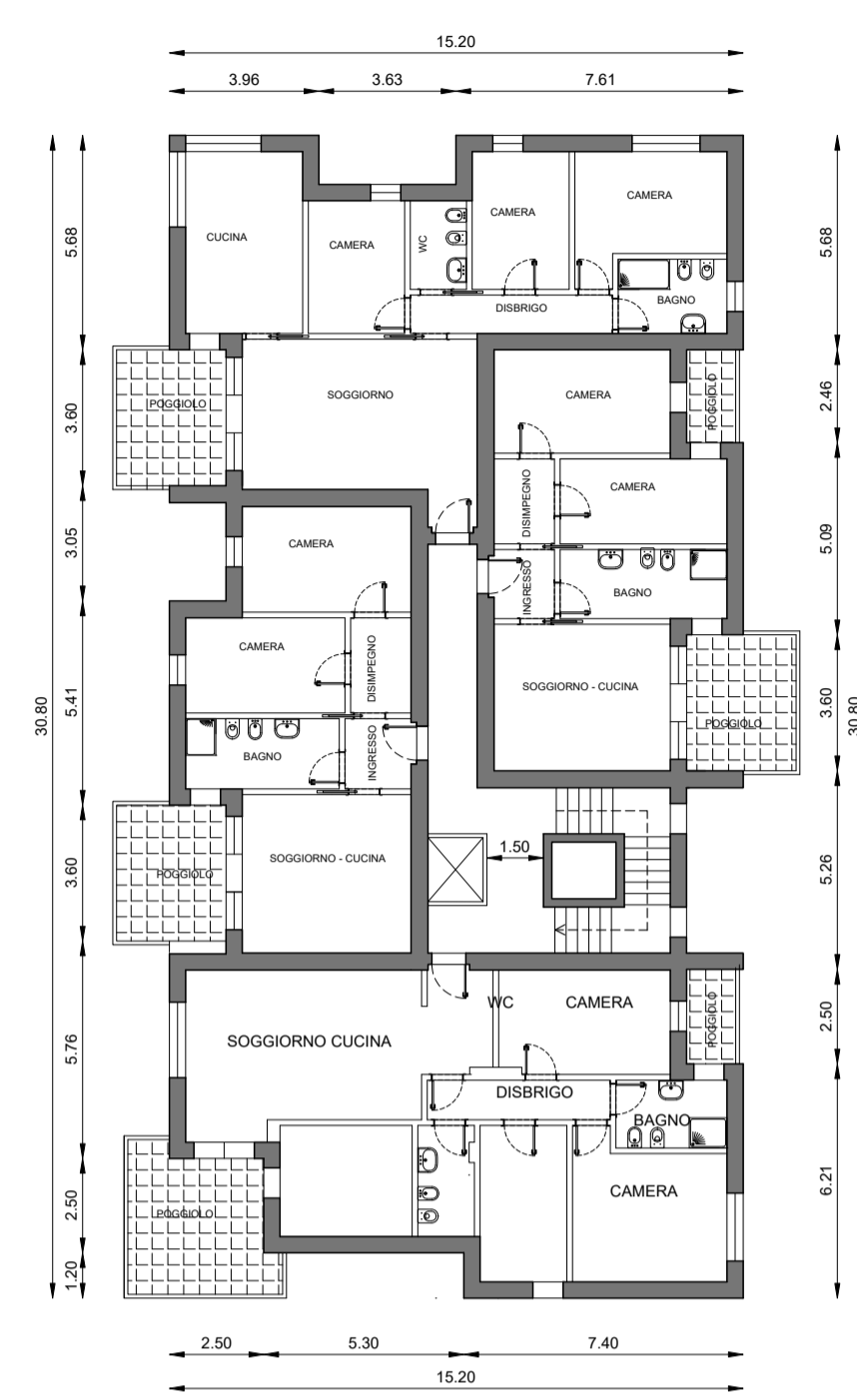
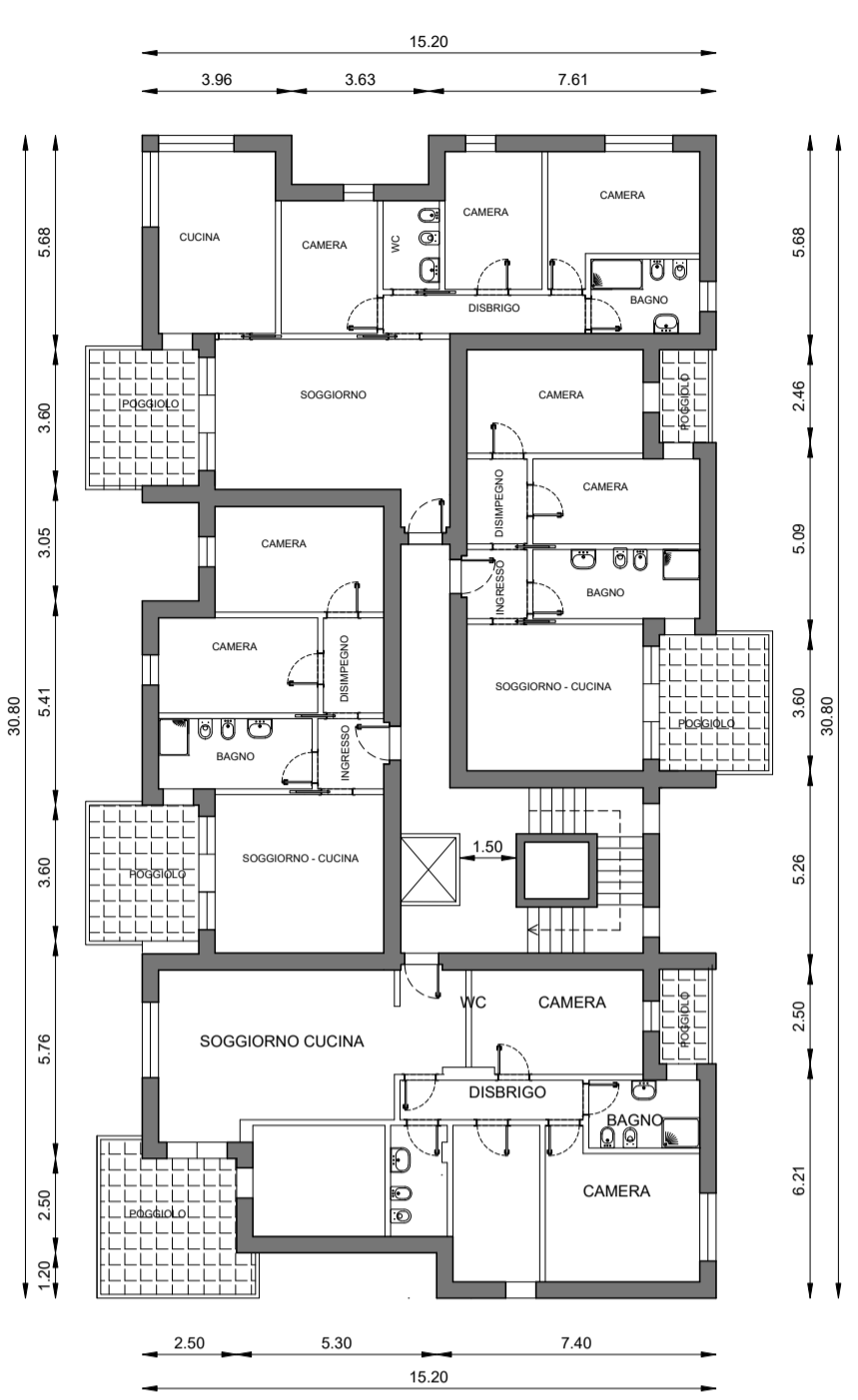
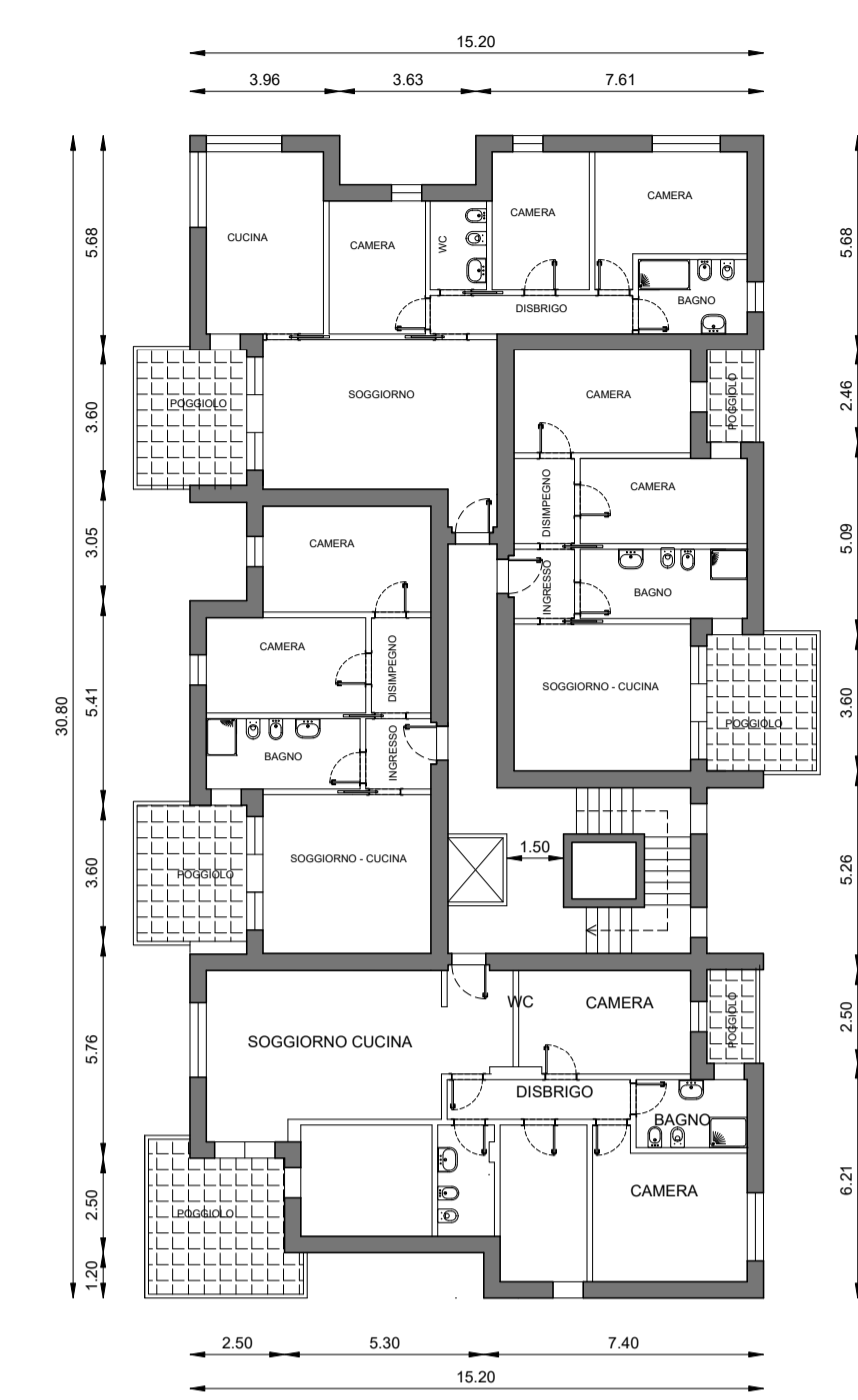
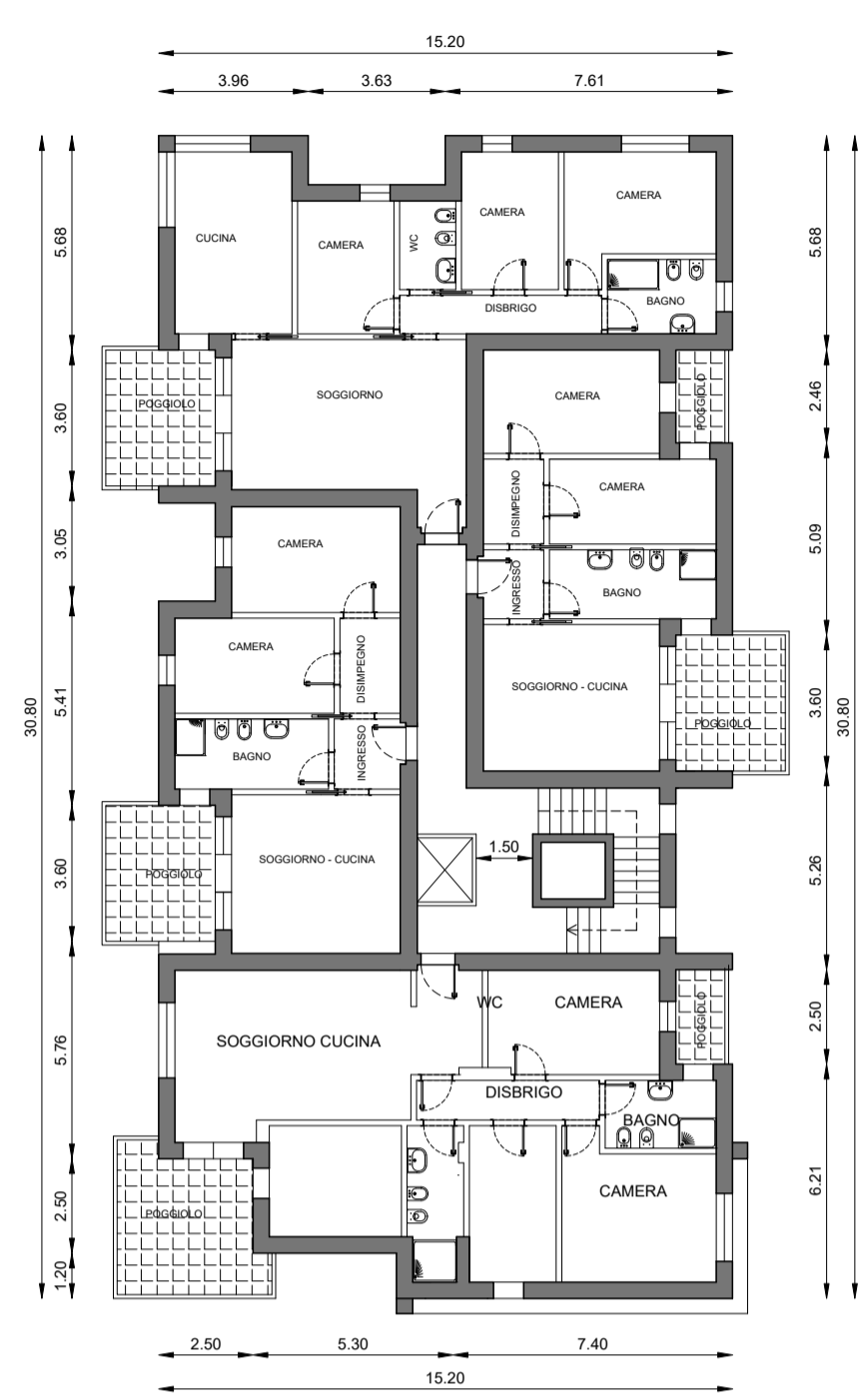
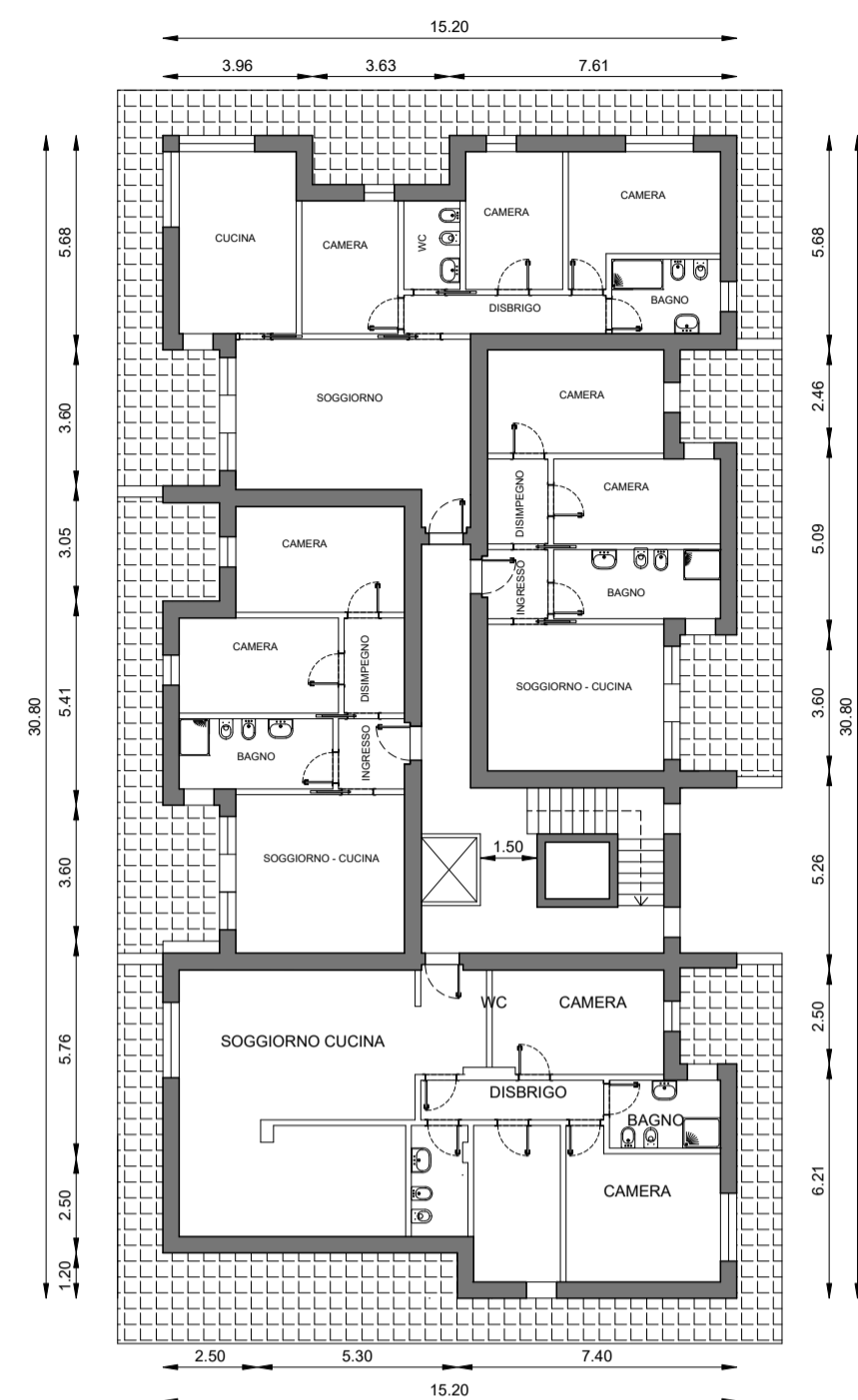
EDIFICIO B - Piano 2

EDIFICIO B - Piano 3

EDIFICIO B - Piano 4

EDIFICIO B - Piano 5

EDIFICIO B - Piano 6



EDIFICIO A - Piano T

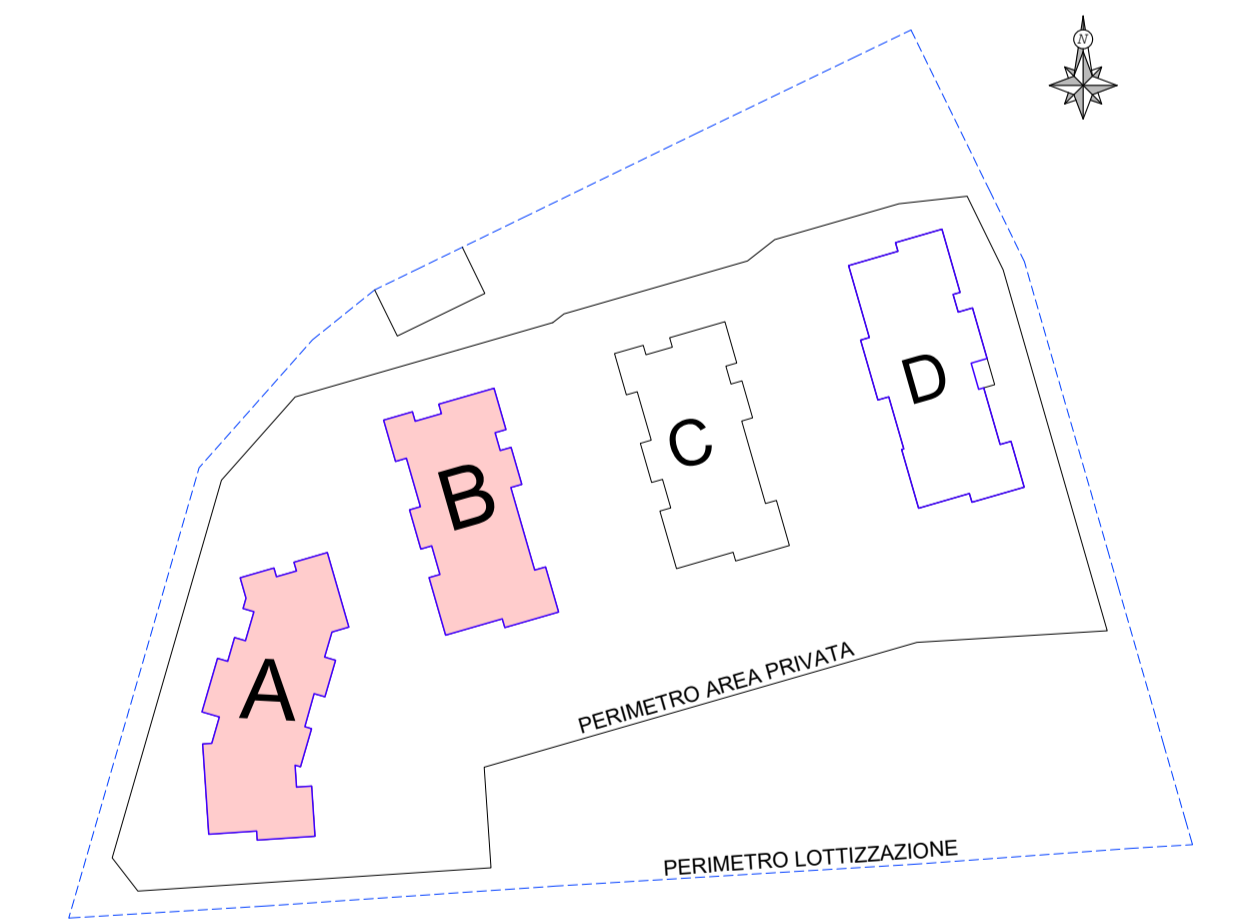
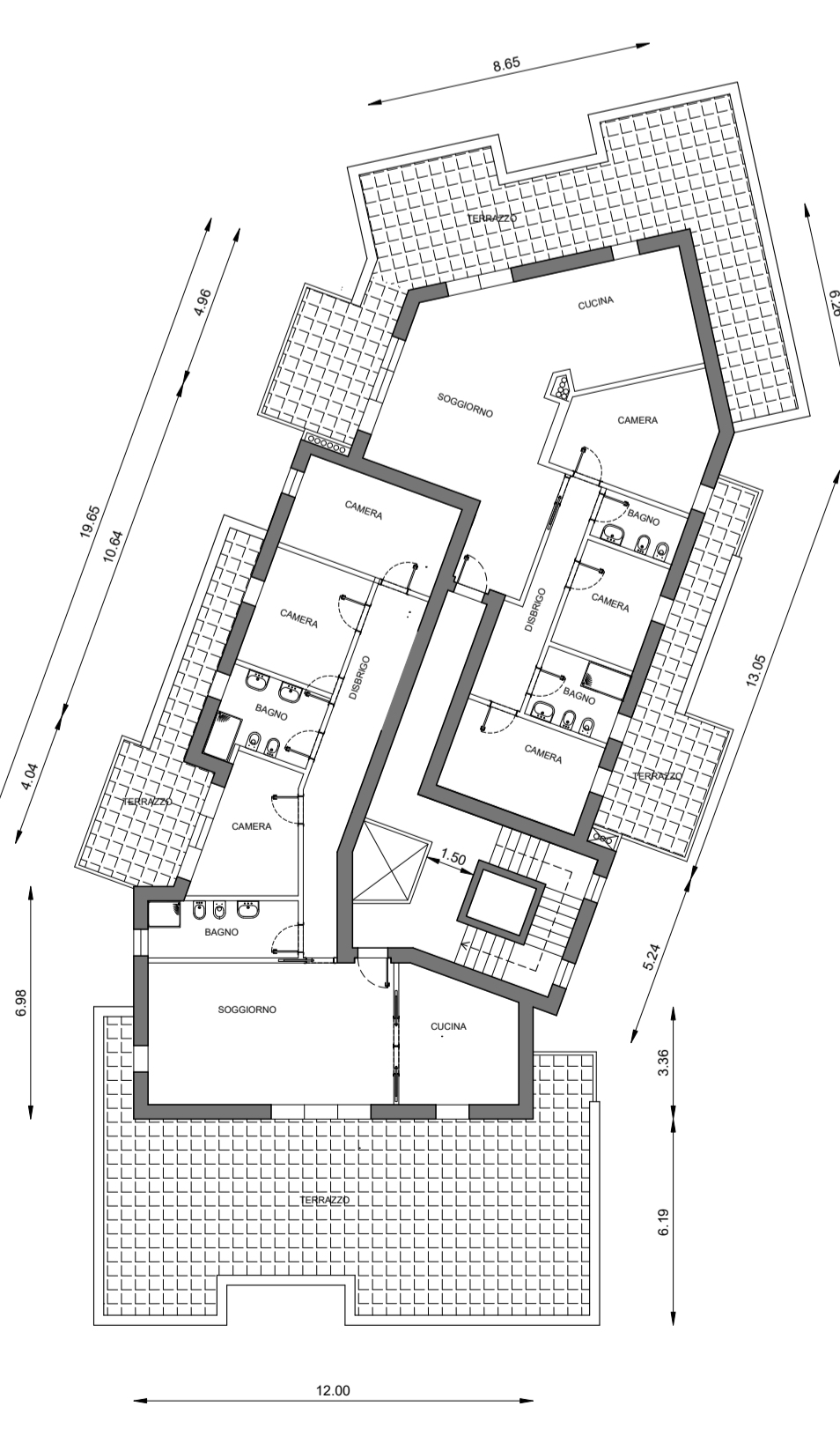
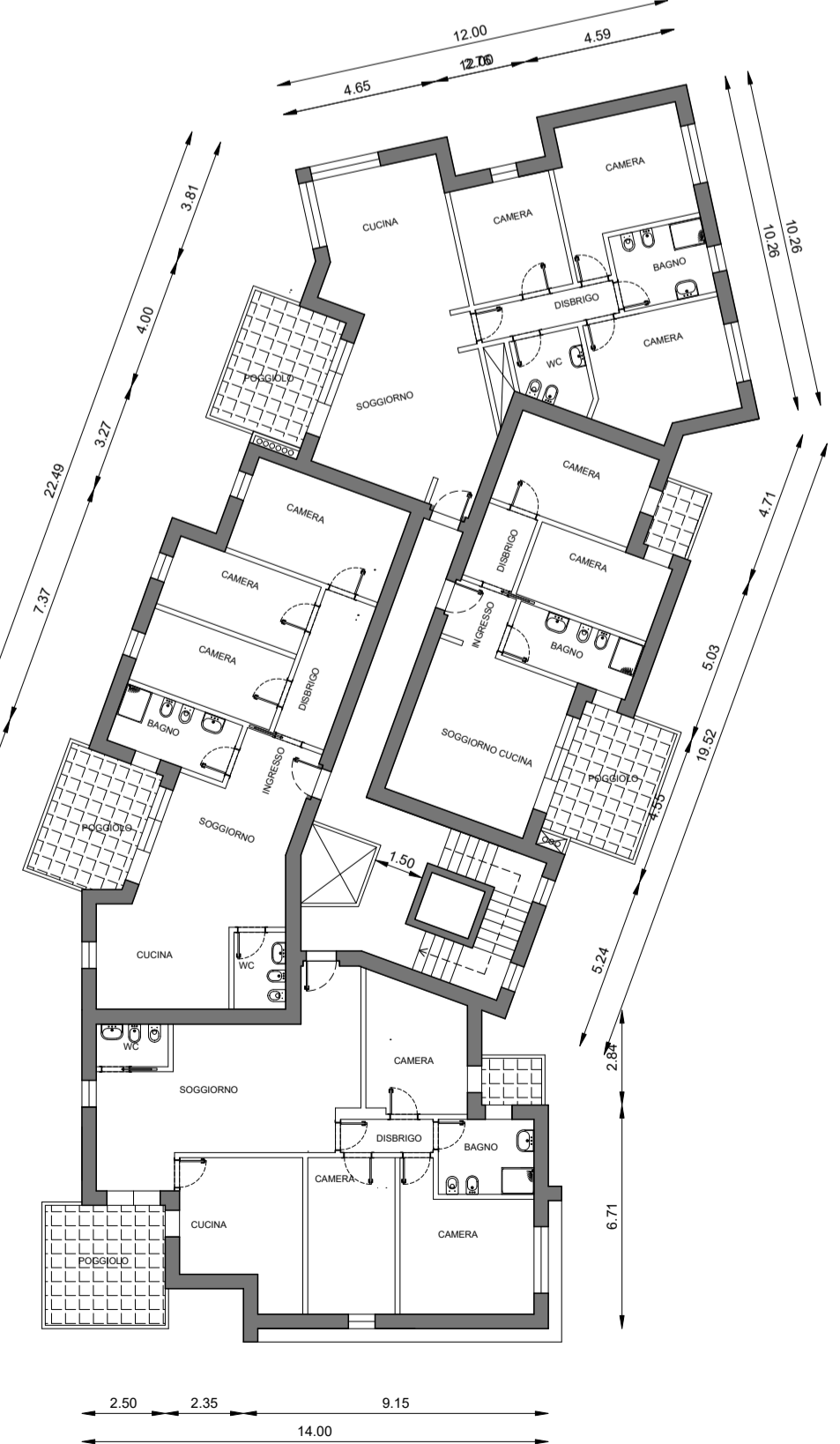
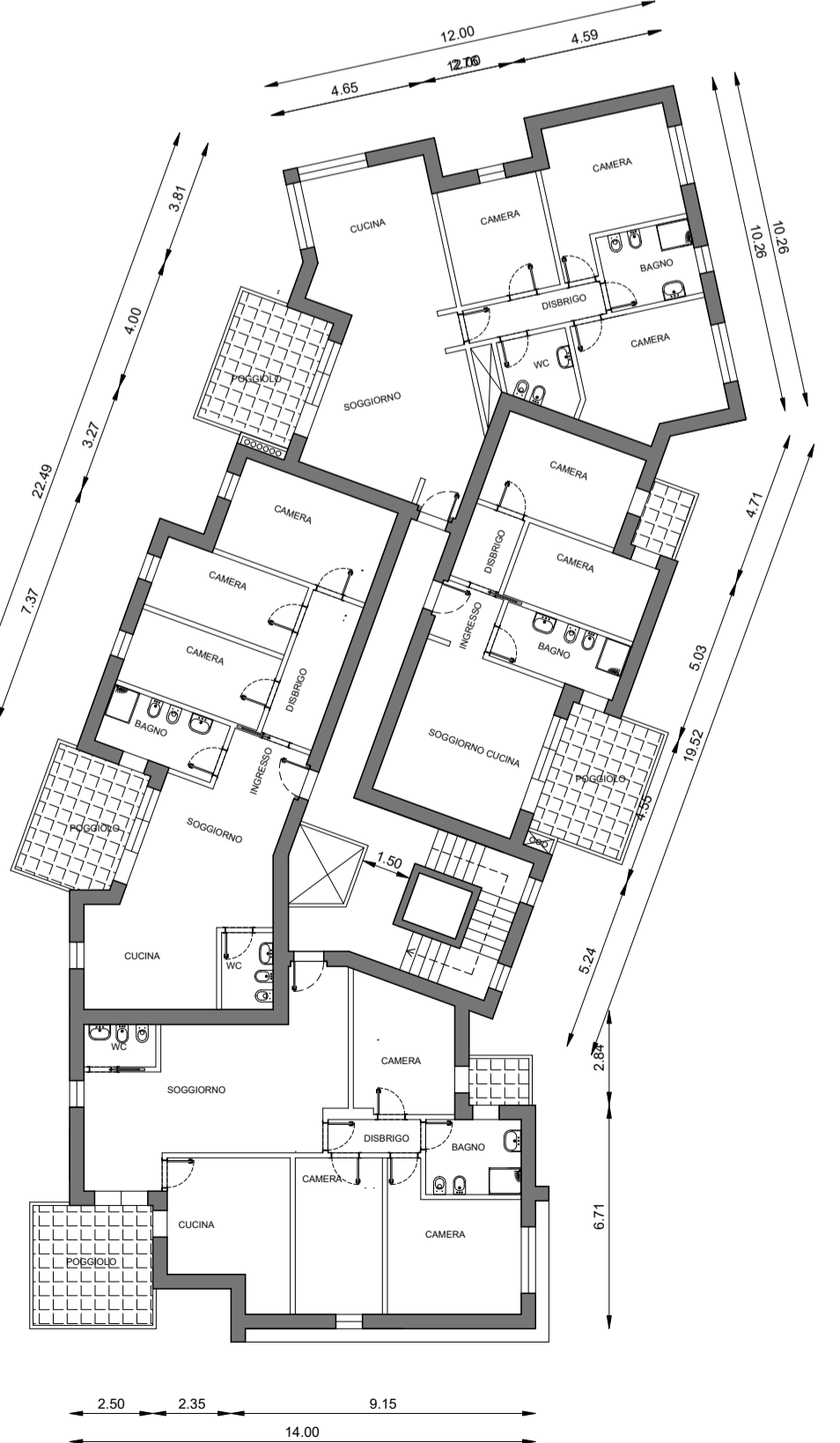
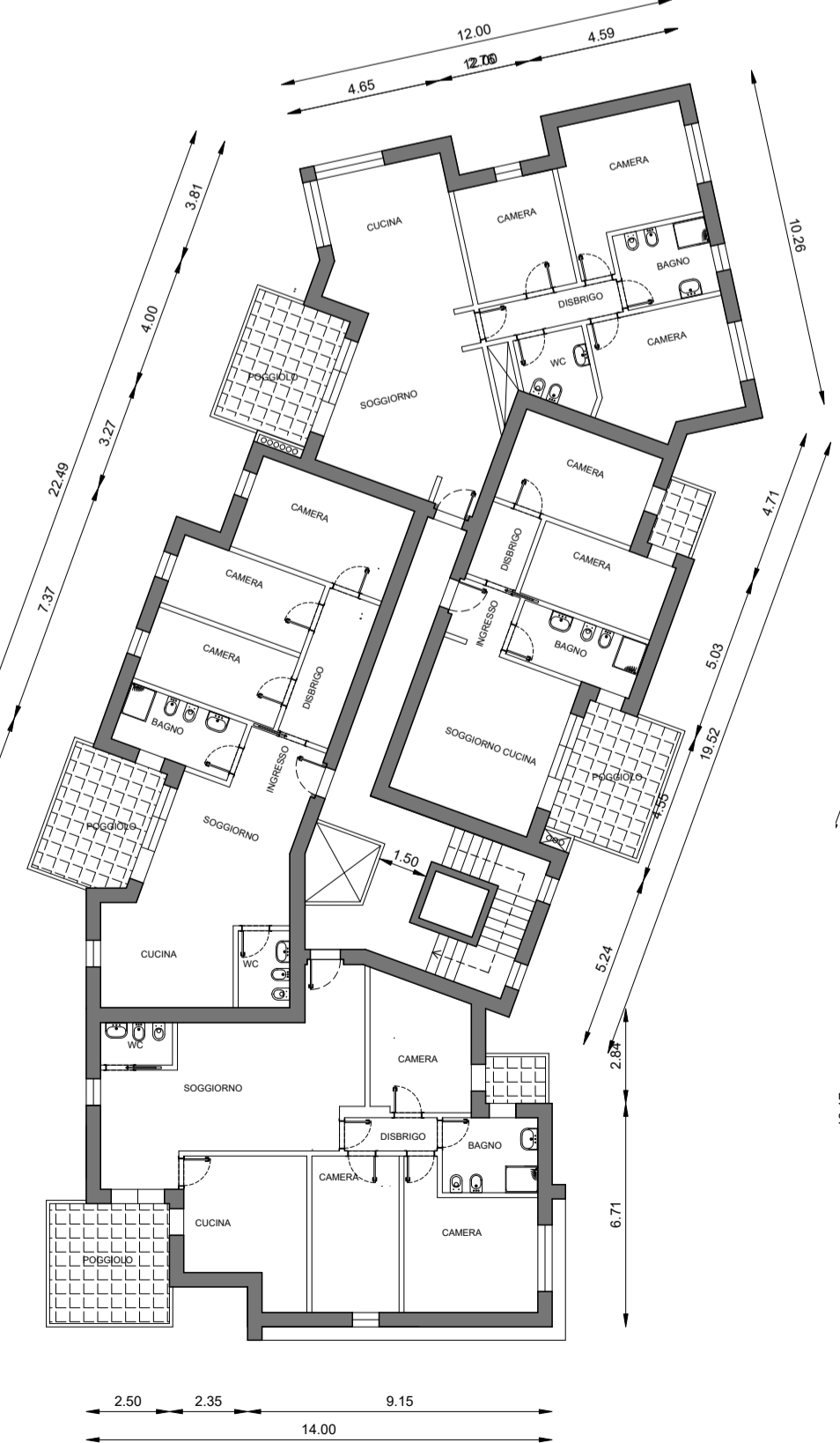
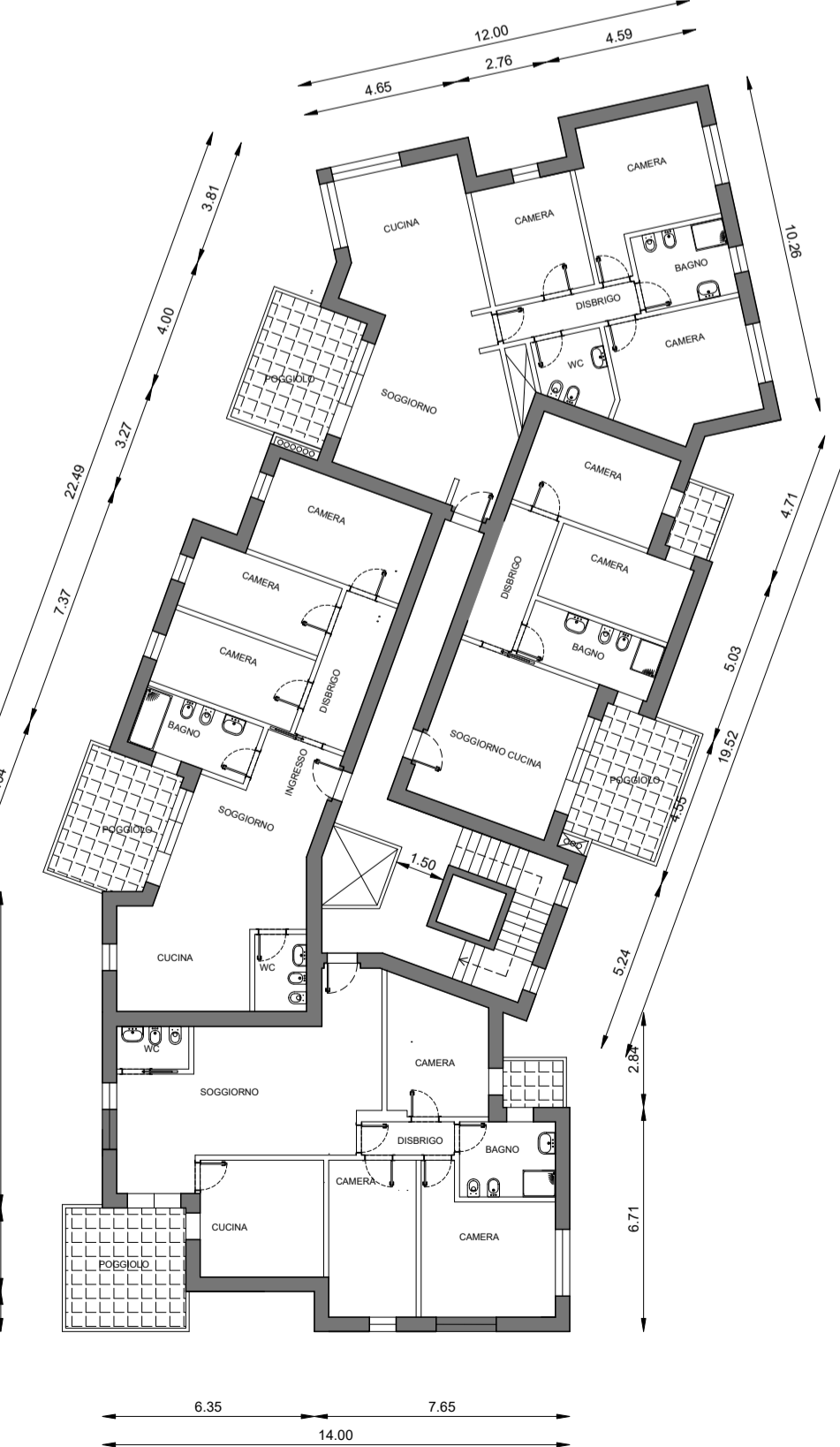
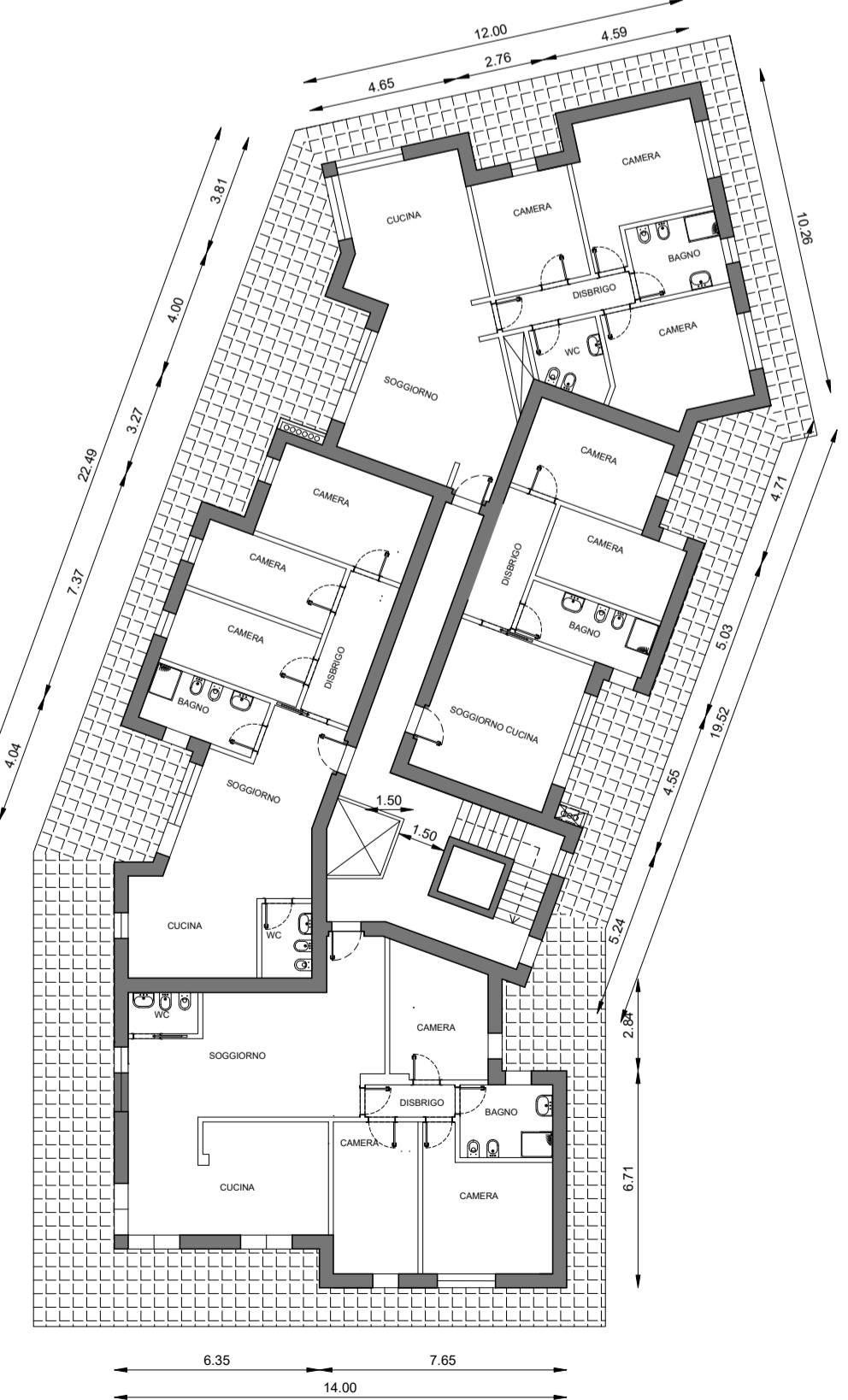
EDIFICIO A - Piano 1

EDIFICIO A - Piano 2

EDIFICIO A - Piano 3

EDIFICIO A - Piano 4

EDIFICIO A - Piano 5



COMMITTENTE GIRARDELLI SRL	DATA PROGETTO marzo 2026
COMUNE DI ROVERETO - PROVINCIA AUTONOMA DI TRENTO	
OGGETTO PIANO DI LOTTIZZAZIONE PL5 - MASTER TOOLS p.ed. 2980 e pp.ff. 2154/3 - 2154/4 C.C. Rovereto	FOGLIO Tav. 10a
CATEGORIA VARIANTE PIANO DI LOTTIZZAZIONE	SCALA 1:200
TITOLO Comparto 1 - Piante edifici A e B	NOTE
SOTTOTITOLO	
Studio di Ingegneria Lucio Manzana Rovereto (TN) - via Livorno 24 - mail lucio@manzana05@gmail.com - P.IVA 01495130229	
ORDINE DEGLI INGEGNERI DELLA PROV. DI TRENTO dott. ing. LUCIO MANZANA 	